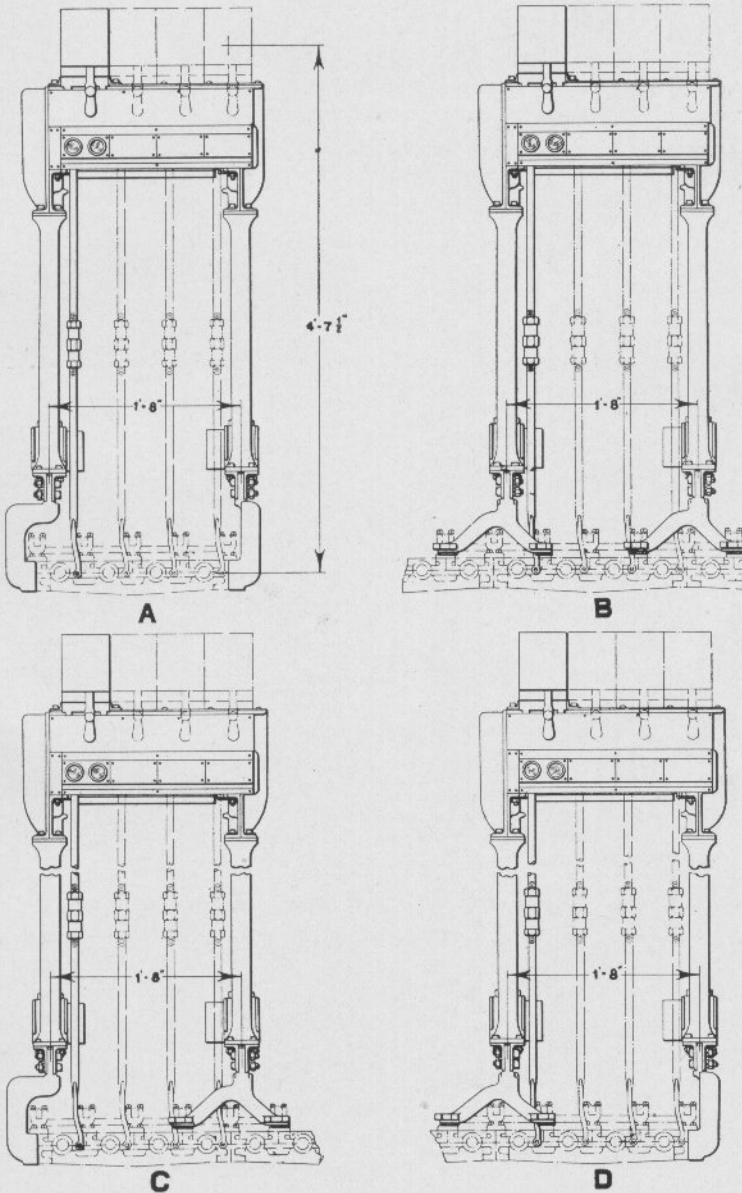


UNION SWITCH & SIGNAL CO.



SUPPORTING FRAMES WITH STYLE "S-8" UNITS

UNION SWITCH & SIGNAL CO.

STYLE "S-8" ELECTRO-MECHANICAL INTERLOCKING MACHINE
SUPPORTING FRAMES WITH STYLE "S-8" UNITS

When Complete Machines are Required Refer to Plate A-1000

Refer to Ordering Instructions in Front of This Section for Information
to Accompany Order

Order by Plate, Piece, Reference and Abbreviated Description Given in
Heavy Face Type Only

Piece	Ref.	Description	Drawing Reference
	A	Supporting Frame , complete for 4-lever S. & F. Machine, with Style "S-8" Electric Units for mounting on existing S. & F. Machine.....	D-2318-1
	Aa	Supporting Frame , complete for 8-lever S. & F. Machine, with Style "S-8" Electric Units for mounting on existing S. & F. Machine.....	D-2318-1
	Ab	Supporting Frame , complete for 12 (or more) lever S. & F. Machine with Style "S-8" Electric Units for mounting on existing S. & F. Machine. (Specify number of levers this frame is to span, location of electric units and lever numbers.....	D-2318-1
	B	4-Lever Intermediate Supporting Frame , complete with Style "S-8" Electric Units for mounting on existing S. & F. Machine.....	D-2318-1
	Ba	8-Lever Intermediate Supporting Frame , complete with Style "S-8" Electric Units for mounting on existing S. & F. Machine.....	D-2318-1
	Bb	12 (or more) Lever Intermediate Supporting Frame , complete with Style "S-8" Electric Units, for mounting on existing S. & F. Machine. (Specify number of S. & F. levers this frame is to span, location of electric units on frame.....	D-2318-1
	C	4-Lever, Left Hand End Supporting Frame , complete with Style "S-8" Electric Units for mounting on existing S. & F. Machine.....	D-2318-1
	Ca	8-Lever Left Hand End Supporting Frame , complete with Style "S-8" Electric Units for mounting on existing S. & F. Machine.....	D-2318-1

UNION SWITCH & SIGNAL CO.

STYLE "S-8" ELECTRO-MECHANICAL INTERLOCKING MACHINE
SUPPORTING FRAMES WITH STYLE "S-8" UNITS

(Continued)

When Complete Machines are Required Refer to Plate A-1000

Refer to Ordering Instructions in Front of This Section for Information
to Accompany Order

Order by Plate, Piece, Reference and Abbreviated Description Given in
Heavy Face Type Only

Piece	Ref.	Description	Drawing Reference
	Cb	12 (or more) Lever Left Hand End Supporting Frame, complete with Style "S-8" Electric Units, for mounting on existing S. & F. Machine. (Specify number of S. & F. levers this frame is to span, location of electric units on frame, and lever numbers) . .	D-2318-1
	D	4-Lever Right Hand End Supporting Frame, complete with Style "S-8" Electric Units for mounting on existing S. & F. Machine.	D-2318-1
	Da	8-Lever Right Hand End Supporting Frame, complete with Style "S-8" Electric Units for mounting on existing S. & F. Machine.	D-2318-1
	Db	12 (or more) Lever Right Hand End Supporting Frame complete with Style "S-8" Electric Units for mounting on existing S. & F. Machine. (Specify number of S. & F. Levers this frame is to span, location of electric units on frame and lever numbers) .	D-2318-1

Zachary C. Gillihan 2008